

LFP Series Brief Introduce

LFP Series rechargeable LiFePO4 Battery Pack for Replace VRLA Battery are ideal applications to RVS, solar energy, boats, and power equipment. These lithium batteries offer a safe and lightweight solution, with higher efficiency, longer lifespan, and deep discharge capabilities compared to traditional sealed lead-acid batteries. Designed with advanced LiFePO4 technology, they provide benefits such as temperature protection and superior recharge and discharge efficiency. Just a little higher costs, these batteries are more cost-effective in the long term due to their extended life span. LFP Series LiFePO4 batteries provide a reliable and worry-free energy solution for a range of applications.

Long Life

Lithium Iron Phosphate

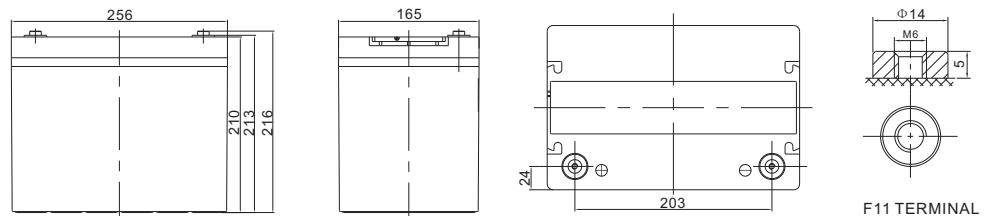
Deep Cycle



Applications

- Solar Energy Storage System
- Wind Energy Power System
- UPS, Backup Power
- Telecommunication
- Electric Vehicles, Electric Mobility
- Lighting
- Medical Equipment

Dimensions & Weight



- Length: 256 ± 1mm Width: 165 ± 1mm Height: 210 ± 1mm Total Height: 210 ± 1mm
- Weight: 8.55 ± 0.1kgs



Technical Specifications

Electrical Characteristics	Nominal Voltage	12.8V
	Nominal Capacity	75Ah
	Energy	960Wh
	Terminal	M6
	Cycle Life	> 4000cycles @80% DOD
	Months Self Discharge	< 3%
	Efficiency of Charge	100 % @0.2C
	Efficiency of Discharge	96 ~ 99% @0.5C
Standard Charge	Charge Voltage	14.6-15.2V
	Charge Mode	0.2C to 13.6V, then 13.6V, charge current to 0.02C(CC/CV)
	Charge Current	15A
	Max. Charge Current	70A
	Charge Cut-off Voltage	14.6V ± 0.2
Standard Discharge	Continuous Current	37.5A
	Max continuous discharge current	75A
	Discharge Cut-off Voltage	10V
Environmental	Charge Temperature	0 °C to 45 °C (32 F to 113 F) @60 ± 25 % Relative Humidity
	Discharge Temperature	-20 °C to 60 °C (-4F to 140 F) @60 ± 25 % Relative Humidity
	Storage Temperature	0 °C to 40 °C (32 F to 104 F) @60 ± 25 % Relative Humidity
	Water Dust Resistance	IP21 (IP65 OPT)
Mechanical	Cell & Method	Cylinder Cell, 4S13P
	Plastic Case	ABS
	Dimensions (in./mm.)	256*165*210mm/10.08*6.5*8.27Ins
	Weight (lbs./kg.)	Approx: 8.55kgs/18.85lbs
	Gravimetric specific energy	112.28WH/KG
	Bluetooth (optional)	/
	LCD display (optional)	/

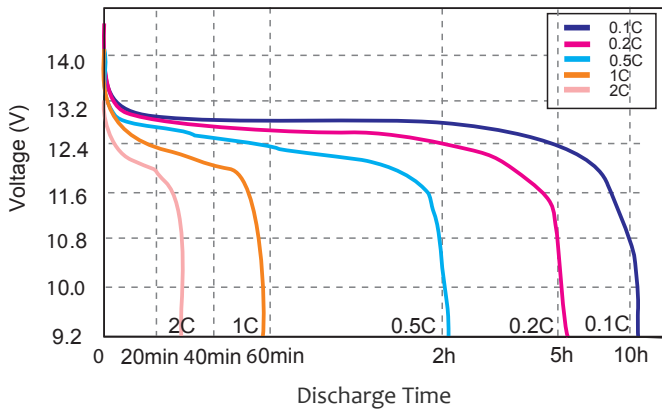
Note: All above information shall be changed without prior notice, CSSUN reserves the right to explain and update the latest information. Welcome contact CSSUN for the latest information.

BMS Specifications

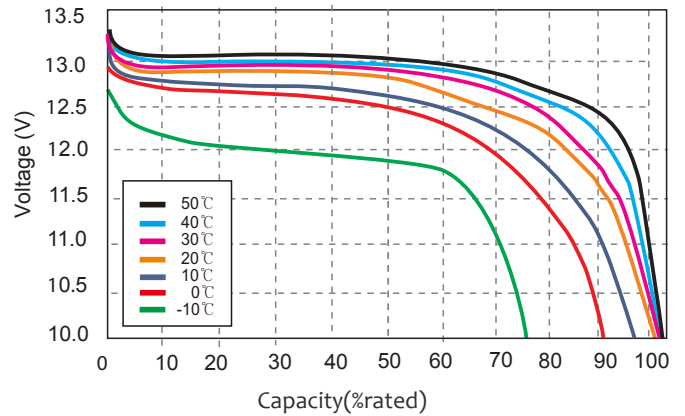
- Overcharge detection function
- Over discharge detection function
- Over current detection function
- Temperature protection
- Cell Voltage balance function
- Short detection function

Performance Characteristics (Data test from 4 Series Cell)

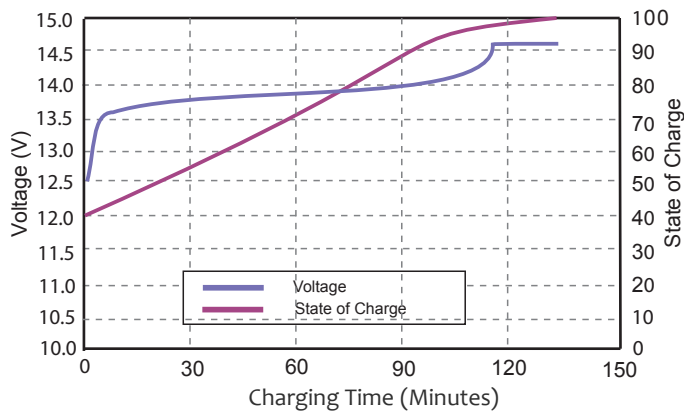
Different Rate Discharge Curve (25°C)



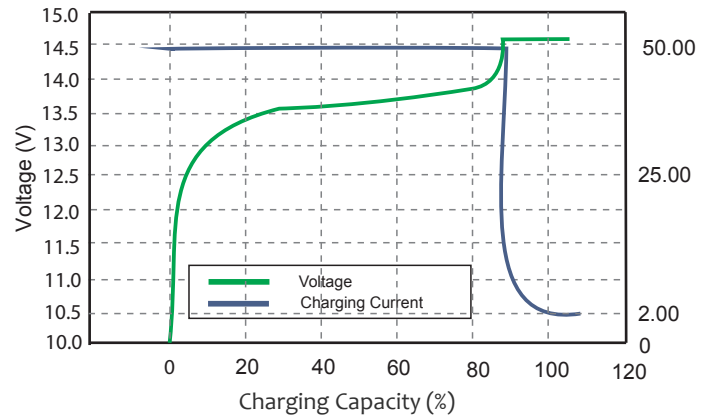
Different Temperature Discharge Curve At 0.5c



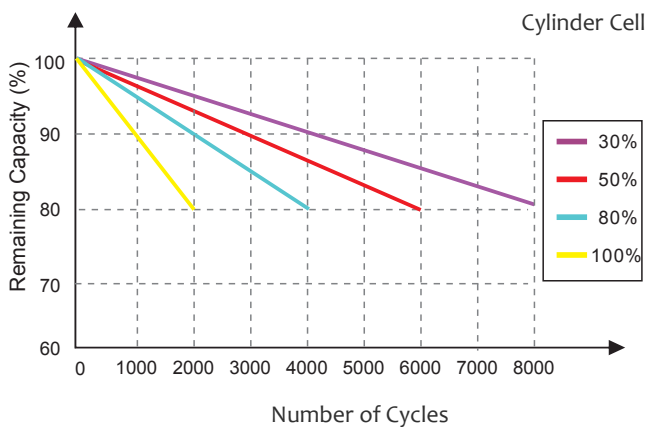
State Of Charge Curve At 0.5c (25°C)



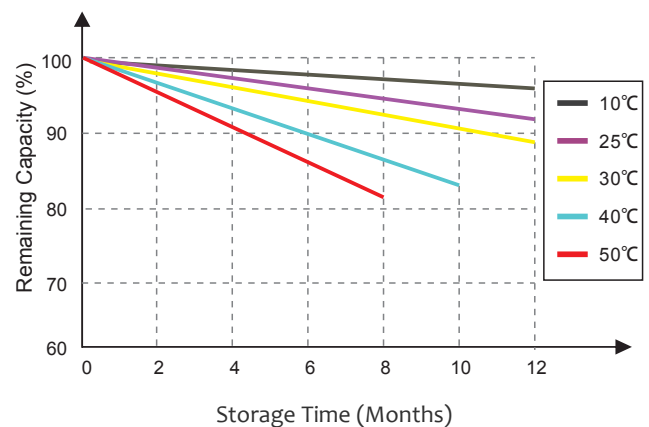
Charging Characteristics At 0.5c (25°C)



Cycle Life Curve At 1c According DoD



Self Discharge Characteristics Curve



SAFETY WARNING : Use only within the allowed parameters. Do not short circuit or over-load the battery. Charge only using an approved charger designed specifically to charge this battery. Do not heat above maximum temperatures indicated. Never crush, mutilate, puncture or abuse the battery. Do not dismantle the pack or disable any of the protective devices or circuits. Do not use the battery if you suspect it may be faulty or damaged.

Add: Introduction Building, Xingdong Industry Park, Bao'an District, Shenzhen, Guangdong, China
 Tel: +86-755-29123661 email: sales@cssun.net , support@cssun.net
 website: www.cssun.net